

KEY FEATURES

- Standard mortised hinges
- U.L. rated up to 3 hour/A label
- On-site engineering services
- Tested as an operable, standard 1 3/4" door in accordance with ASTM E90
- 4 - 6 week delivery
- Installation coordination available on request
- Custom lab and field tests available

SOUND TRANSMISSION CLASS (STC) TABLE		
STC Value	Rating	Description
50-60	Excellent	Loud sounds heard faintly or not at all.
40-50	Very Good	Loud speech heard faintly but not understood.
35-40	Good	Loud speech heard but not understood.
30-35	Fair	Loud speech understood fairly well.
25-30	Poor	Normal speech understood easily and distinctly.
20-25	Very Poor	Low speech audible.

PROJECT REFERENCES INSTALLATIONS			
PROJECT	TYPE OF INSTALLATION	ARCHITECT	LOCATION
Broward Center For The Performing Arts	Public Auditorium	Borelli, Frankel, Blitstein Assoc.	Ft. Lauderdale, FL
Discovery Center	Theatre	Evernon Johnson Assoc.	Ft. Lauderdale, FL
The Dolphin Hotel	Hotel/Convention Center	Alan Lapidus, PC	Lake Buena Vista, FL
The Swan Hotel	Hotel/Convention Center	Alan Lapidus, PC	Lake Buena Vista, FL
Hostos Community College	School Auditorium	Gwathmey, Siegel Assoc.	Bronx, NY
Kennedy Middle School	School Auditorium	Design Matrix	Clearwater, FL
Merck Office Building	Office Bldg./Conference Center	Kevin Roche & Associates	Readington, NJ
26th Ward	Dewatering Facility	Stone & Webster Hazen & Sawyer	New York, NY
South American Project	Embassy	Leo A. Daly	La Paz, Bolivia
Peace Vector IV	Military Barracks & Headquarters	Burns & McDonnell	Sakara, Egypt

SPECIFICATIONS SECTION 08380 — SOUND RETARDANT STEEL DOOR AND FRAME ASSEMBLIES

PART 1. GENERAL

1.01 SCOPE OF WORK

- A. The work required under this section shall consist of the following items as herein specified.
1. Furnish hollow metal, sound rated doors and frames — **STC 35** rating.
 2. Furnish hollow metal, fire/sound rated doors and frames.
 3. Furnish sound gaskets and hinges.

1.02 RELATED WORK

- A. The following work is specified elsewhere and is not included in the work of this section:
1. Installation (or grouting) of frames and doors.
 2. Installation of sound seals.
 3. Furnishing and installation of finish hardware.
 4. Glass and glazing.
 5. Finish painting

1.03 SUBMITTALS

- A. Submit the following for architectural approval:
1. Shop Drawings: Product data including manufacturer's specification, details of construction, materials, dimensions, hardware preparation, gasketing, label compliance, sound rating, profiles, and finishes. Provide a schedule of doors and frames, using same reference numbers for details and openings as those on the contract drawings.
 2. Test Reports: Provide copies of sound tests showing compliance with the specified sound ratings. Tests shall be in accordance with ASTM E90 as tested by an independent testing facility.

1.04 ACOUSTICAL PERFORMANCE CRITERIA

- A. For door and frame assemblies: Rating of **STC 35**, operable.
B. Manufacturer shall have at least (5) years experience in production and manufacture of specified materials.
C. Approved manufacturer:
1. **Firedoor Corporation of Florida**

PART II. PRODUCTS

2.01 MATERIALS

A. FRAMES

1. Form frames of minimum 16GA steel, full factory welded unit construction with corners mitered, reinforced and continuously welded, full depth and width of frames. Knock down type frames are not acceptable.

B. DOORS

1. Provide flush design doors, 1-3/4" thick, constructed with continuous uninterrupted welds at vertical edges "seamless" and internally constructed to produce sound ratings indicated.
 - a. Minimum 18GA face sheets.

C. HARDWARE REINFORCEMENTS

1. Hinge and strike reinforcements minimum 7GA.
2. Reinforcements for surface mounted hardware, minimum 12GA.

D. HINGES

1. Shall be 5" template full mortised extra heavy hinges as manufactured by Hager, Stanley or approved equal.
2. Cam-lift hinges are not required.

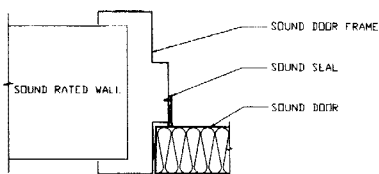
E. SOUND SEALS

1. Shall be manufactured by Zero International.
2. Shall be as tested by **Firedoor Corporation of Florida**.

PART III. EXECUTION

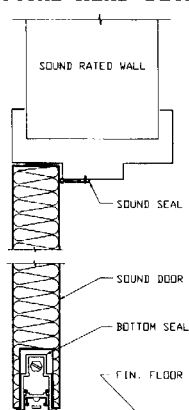
3.01 INSTALLATION

- A. Doors and frames shall be installed by a qualified installer.
B. Sound seals shall be installed by a company experienced in sound gasket installation as recommended by **Firedoor Corporation of Florida**.



TYPICAL JAMB DETAIL

TYPICAL HEAD DETAIL



TYPICAL SILL DETAIL



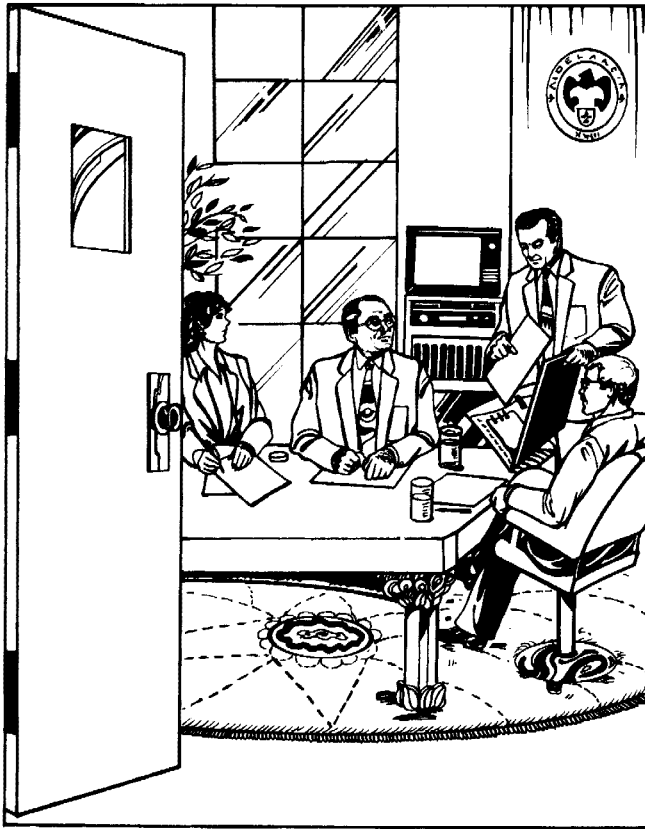
FIREDOOR CORPORATION OF FLORIDA
P.O. Box 380878 1350 N.W. 74 Street
Miami, FL 33238-0878 Miami, FL 33147
(305) 691-1500 • Fax: (305) 836-4797



FIRESONIC

41 VISION

Sound Rated Hollow Metal
Door Assembly — STC Rating 41



KEY FEATURES

- Standard mortised hinges
- U.L. rated up to 3 hour/A label
- On-site engineering services
- Tested as an operable, standard 1 3/4" door in accordance with ASTM E90
- 4 - 6 week delivery
- Installation coordination available on request
- Custom lab and field tests available

SOUND TRANSMISSION CLASS (STC) TABLE		
STC Value	Rating	Description
50-60	Excellent	Loud sounds heard faintly or not at all.
40-50	Very Good	Loud speech heard faintly but not understood.
35-40	Good	Loud speech heard but hardly intelligible.
30-35	Fair	Loud speech understood fairly well.
25-30	Poor	Normal speech understood easily and distinctly.
20-25	Very Poor	Low speech audible.

PROJECT REFERENCES INSTALLATIONS			
PROJECT	TYPE OF INSTALLATION	ARCHITECT	LOCATION
Broward Center For The Performing Arts	Public Auditorium	Borelli, Frankel, Blitstein Assoc.	Ft. Lauderdale, FL
Discovery Center	Theatre	Evernon Johnson Assoc.	Ft. Lauderdale, FL
The Dolphin Hotel	Hotel/Convention Center	Alan Lapidus, PC	Lake Buena Vista, FL
The Swan Hotel	Hotel/Convention Center	Alan Lapidus, PC	Lake Buena Vista, FL
Hostos Community College	School Auditorium	Gwathmey, Siegel Assoc.	Bronx, NY
Kennedy Middle School	School Auditorium	Design Matrix	Clearwater, FL
Merck Office Building	Office Bldg./Conference Center	Kevin Roche & Associates	Readington, NJ
26th Ward	Dewatering Facility	Stone & Webster Hazen & Sawyer	New York, NY
South American Project	Embassy	Leo A. Daly	La Paz, Bolivia
Peace Vector IV	Military Barracks & Headquarters	Burns & McDonnell	Sakara, Egypt

SPECIFICATIONS SECTION 08380 — SOUND RETARDANT STEEL DOOR AND FRAME ASSEMBLIES

PART 1. GENERAL

1.01 SCOPE OF WORK

- A. The work required under this section shall consist of the following items as herein specified.
1. Furnish hollow metal, sound rated doors and frames — **STC 41** rating.
 2. Furnish hollow metal, fire/sound rated doors and frames.
 3. Furnish sound gaskets, thresholds and hinges.

1.02 RELATED WORK

- A. The following work is specified elsewhere and is not included in the work of this section:
1. Installation (or grouting) of frames and doors.
 2. Installation of sound seals.
 3. Furnishing and installation of finish hardware.
 4. Glass and glazing.
 5. Finish painting

1.03 SUBMITTALS

- A. Submit the following for architectural approval:
1. Shop Drawings: Product data including manufacturer's specification, details of construction, materials, dimensions, hardware preparation, gasketing, label compliance, sound rating, profiles, and finishes. Provide a schedule of doors and frames, using same reference numbers for details and openings as those on the contract drawings.
 2. Test Reports: Provide copies of sound tests showing compliance with the specified sound ratings. Tests shall be in accordance with ASTM E90 as tested by an independent testing facility.

1.04 ACOUSTICAL PERFORMANCE CRITERIA

- A. For door and frame assemblies: Rating of **STC 41**, operable.
- B. Manufacturer shall have at least (5) years experience in production and manufacture of specified materials.
- C. Approved manufacturer:
1. **Firedoor Corporation of Florida**

PART II. PRODUCTS

2.01 MATERIALS

A. FRAMES

1. Form frames of minimum 16GA steel, full factory welded unit construction with corners mitered, reinforced and continuously welded, full depth and width of frames. Knock down type frames are not acceptable.

B. DOORS

1. Provide flush design doors, 1-3/4" thick, constructed with continuous uninterrupted welds at vertical edges "seamless" and internally constructed to produce sound ratings indicated.
 - a. Minimum 18GA face sheets.

C. HARDWARE REINFORCEMENTS

1. Hinge and strike reinforcements minimum 7GA.
2. Reinforcements for surface mounted hardware, minimum 12GA.

D. HINGES

1. Shall be 5" template full mortised extra heavy hinges as manufactured by Hager, Stanley or approved equal.
2. Cam-lift hinges are not required.

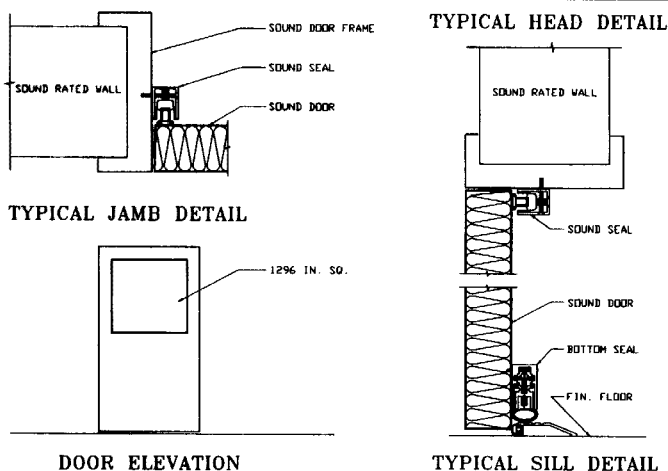
E. SOUND SEALS

1. Shall be manufactured by Zero International.
2. Shall be as tested by **Firedoor Corporation of Florida**.

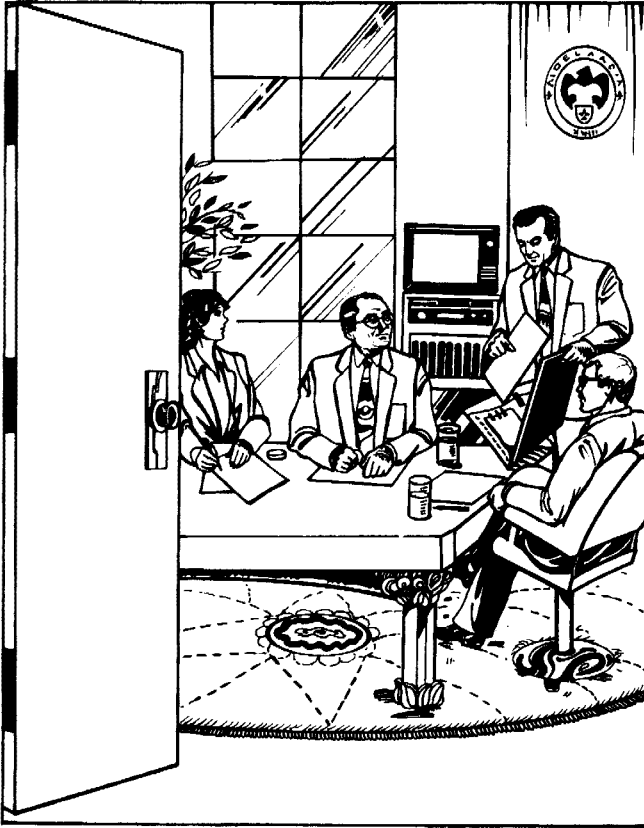
PART III. EXECUTION

3.01 INSTALLATION

- A. Doors and frames shall be installed by a qualified installer.
- B. Sound seals shall be installed by a company experienced in sound gasket installation as recommended by **Firedoor Corporation of Florida**.



FIREDOOR CORPORATION OF FLORIDA
P.O. Box 380878 1350 N.W. 74 Street
Miami, FL 33238-0878 Miami, FL 33147
(305) 691-1500 • Fax: (305) 836-4797



KEY FEATURES

- Standard mortised hinges
- U.L. rated up to 3 hour/A label
- On-site engineering services
- Tested as an operable, standard 1 3/4" door in accordance with ASTM E90-90
- 4 - 6 week delivery
- Installation coordination available on request
- ASTM/NVLAP tested
- Custom lab and field tests available

SOUND TRANSMISSION CLASS (STC) TABLE		
STC Value	Rating	Description
50-60	Excellent	Loud sounds heard faintly or not at all.
40-50	Fair	Loud speech heard but hardly intelligible.
35-40	Good	Loud speech heard but hardly intelligible.
30-35	Fair	Loud speech understood fairly well.
25-30	Poor	Normal speech understood easily and distinctly.
20-25	Very Poor	Low speech audible.

PROJECT REFERENCES INSTALLATIONS			
PROJECT	TYPE OF INSTALLATION	ARCHITECT	LOCATION
Broward Center For The Performing Arts	Public Auditorium	Borelli, Frankel, Blitstein Assoc.	Ft. Lauderdale, FL
Discovery Center	Theatre	Evernon Johnson Assoc.	Ft. Lauderdale, FL
The Dolphin Hotel	Hotel/Convention Center	Alan Lapidus, PC	Lake Buena Vista, FL
The Swan Hotel	Hotel/Convention Center	Alan Lapidus, PC	Lake Buena Vista, FL
Hostos Community College	School Auditorium	Gwathmey, Siegel Assoc.	Bronx, NY
Kennedy Middle School	School Auditorium	Design Matrix	Clearwater, FL
Merck Office Building	Office Bldg./Conference Center	Kevin Roche & Associates	Readington, NJ
26th Ward	Dewatering Facility	Stone & Webster Hazen & Sawyer	New York, NY
South American Project	Embassy	Leo A. Daly	La Paz, Bolivia
Peace Vector IV	Military Barracks & Headquarters	Burns & McDonnell	Sakara, Egypt

SPECIFICATIONS SECTION 08380 — SOUND RETARDANT STEEL DOOR AND FRAME ASSEMBLIES

PART 1. GENERAL

1.01 SCOPE OF WORK

- A. The work required under this section shall consist of the following items as herein specified.
1. Furnish hollow metal, sound rated doors and frames — **STC 41** rating.
 2. Furnish hollow metal, fire/sound rated doors and frames.
 3. Furnish sound gaskets, thresholds and hinges.

1.02 RELATED WORK

- A. The following work is specified elsewhere and is not included in the work of this section:
1. Installation (or grouting) of frames and doors.
 2. Installation of sound seals.
 3. Furnishing and installation of finish hardware.
 4. Glass and glazing.
 5. Finish painting

1.03 SUBMITTALS

- A. Submit the following for architectural approval:
1. Shop Drawings: Product data including manufacturer's specification, details of construction, materials, dimensions, hardware preparation, gasketing, label compliance, sound rating, profiles, and finishes. Provide a schedule of doors and frames, using same reference numbers for details and openings as those on the contract drawings.
 2. Test Reports: Provide copies of sound tests showing compliance with the specified sound ratings. Tests shall be in accordance with ASTM E90-90 as tested by an independent, certified NVLAP testing facility.

1.04 ACOUSTICAL PERFORMANCE CRITERIA

- A. For door and frame assemblies: Rating of **STC 41**, operable.
- B. Manufacturer shall have at least (5) years experience in production and manufacture of specified materials.
- C. Approved manufacturer:
1. **Firedoor Corporation of Florida**

PART II. PRODUCTS

2.01 MATERIALS

A. FRAMES

1. Form frames of minimum 16GA steel, full factory welded unit construction with corners mitered, reinforced and continuously welded, full depth and width of frames. Knock down type frames are not acceptable.

B. DOORS

1. Provide flush design doors, 1-3/4" thick, constructed with continuous uninterrupted welds at vertical edges "seamless" and internally constructed to produce sound ratings indicated.
 - a. Minimum 18GA face sheets.

C. HARDWARE REINFORCEMENTS

1. Hinge and strike reinforcements minimum 7GA.
2. Reinforcements for surface mounted hardware, minimum 12GA.

D. HINGES

1. Shall be 5" template full mortised extra heavy hinges as manufactured by Hager, Stanley or approved equal.
2. Cam-lift hinges are not required.

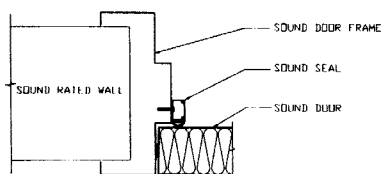
E. SOUND SEALS

1. Shall be manufactured by Zero International.
2. Shall be as tested by **Firedoor Corporation of Florida**.

PART III. EXECUTION

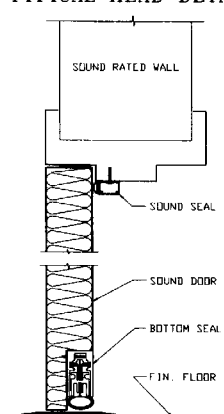
3.01 INSTALLATION

- A. Doors and frames shall be installed by a qualified installer.
- B. Sound seals shall be installed by a company experienced in sound gasket installation as recommended by **Firedoor Corporation of Florida**.



TYPICAL JAMB DETAIL

TYPICAL HEAD DETAIL



TYPICAL SILL DETAIL



FIREDOOR CORPORATION OF FLORIDA
P.O. Box 380878 1350 N.W. 74 Street
Miami, FL 33238-0878 Miami, FL 33147
(305) 691-1500 • Fax: (305) 836-4797



KEY FEATURES

- Standard mortised hinges
- U.L. rated up to 3 hour/A label
- On-site engineering services
- Tested as an operable, standard 1 3/4" door in accordance with ASTM E90-90
- 4 - 6 week delivery
- Installation coordination available on request
- ASTM/NVLAP tested
- Custom lab and field tests available

SOUND TRANSMISSION CLASS (STC) TABLE		
STC Value	Rating	Description
50-60	Excellent	Loud sounds heard faintly or not at all.
40-50	Very Good	Loud speech heard faintly but not understood.
35-40	Good	Loud speech heard but hardly intelligible.
30-35	Fair	Loud speech understood fairly well.
25-30	Poor	Normal speech understood easily and distinctly.
20-25	Very Poor	Low speech audible.

PROJECT REFERENCES INSTALLATIONS			
PROJECT	TYPE OF INSTALLATION	ARCHITECT	LOCATION
Broward Center For The Performing Arts	Public Auditorium	Borelli, Frankel, Blitstein Assoc.	Ft. Lauderdale, FL
Discovery Center	Theatre	Evernon Johnson Assoc.	Ft. Lauderdale, FL
The Dolphin Hotel	Hotel/Convention Center	Alan Lapidus, PC	Lake Buena Vista, FL
The Swan Hotel	Hotel/Convention Center	Alan Lapidus, PC	Lake Buena Vista, FL
Hostos Community College	School Auditorium	Gwathmey, Siegel Assoc.	Bronx, NY
Kennedy Middle School	School Auditorium	Design Matrix	Clearwater, FL
Merck Office Building	Office Bldg./Conference Center	Kevin Roche & Associates	Readington, NJ
26th Ward	Dewatering Facility	Stone & Webster Hazen & Sawyer	New York, NY
South American Project	Embassy	Leo A. Daly	La Paz, Bolivia
Peace Vector IV	Military Barracks & Headquarters	Burns & McDonnell	Sakara, Egypt

SPECIFICATIONS SECTION 08380 — SOUND RETARDANT STEEL DOOR AND FRAME ASSEMBLIES

PART 1. GENERAL

1.01 SCOPE OF WORK

- A. The work required under this section shall consist of the following items as herein specified.
1. Furnish hollow metal, sound rated doors and frames — **STC 47** rating.
 2. Furnish hollow metal, fire/sound rated doors and frames.
 3. Furnish sound gaskets, thresholds and hinges.

1.02 RELATED WORK

- A. The following work is specified elsewhere and is not included in the work of this section:
1. Installation (or grouting) of frames and doors.
 2. Installation of sound seals.
 3. Furnishing and installation of finish hardware.
 4. Glass and glazing.
 5. Finish painting

1.03 SUBMITTALS

- A. Submit the following for architectural approval:
1. Shop Drawings: Product data including manufacturer's specification, details of construction, materials, dimensions, hardware preparation, gasketing, label compliance, sound rating, profiles, and finishes. Provide a schedule of doors and frames, using same reference numbers for details and openings as those on the contract drawings.
 2. Test Reports: Provide copies of sound tests showing compliance with the specified sound ratings. Tests shall be in accordance with ASTM E90-90 as tested by an independent, certified NVLAP testing facility.

1.04 ACOUSTICAL PERFORMANCE CRITERIA

- A. For door and frame assemblies: Rating of **STC 47**, operable.
- B. Manufacturer shall have at least (5) years experience in production and manufacture of specified materials.
- C. Approved manufacturer:
1. **Firedoor Corporation of Florida**

PART II. PRODUCTS

2.01 MATERIALS

A. FRAMES

1. Form frames of minimum 16GA steel, full factory welded unit construction with corners mitered, reinforced and continuously welded, full depth and width of frames. Knock down type frames are not acceptable.

B. DOORS

1. Provide flush design doors, 1-3/4" thick, constructed with continuous uninterrupted welds at vertical edges "seamless" and internally constructed to produce sound ratings indicated.
 - a. Minimum 18GA face sheets.

C. HARDWARE REINFORCEMENTS

1. Hinge and strike reinforcements minimum 7GA.
2. Reinforcements for surface mounted hardware, minimum 12GA.

D. HINGES

1. Shall be 5" template full mortised extra heavy hinges as manufactured by Hager, Stanley or approved equal.
2. Cam-lift hinges are not required.

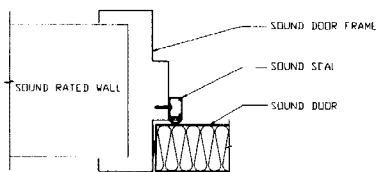
E. SOUND SEALS

1. Shall be manufactured by Zero International.
2. Shall be as tested by **Firedoor Corporation of Florida**.

PART III. EXECUTION

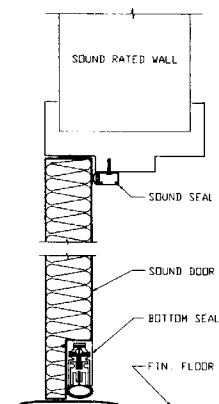
3.01 INSTALLATION

- A. Doors and frames shall be installed by a qualified installer.
- B. Sound seals shall be installed by a company experienced in sound gasket installation as recommended by **Firedoor Corporation of Florida**.



TYPICAL JAMB DETAIL

TYPICAL HEAD DETAIL



TYPICAL SILL DETAIL



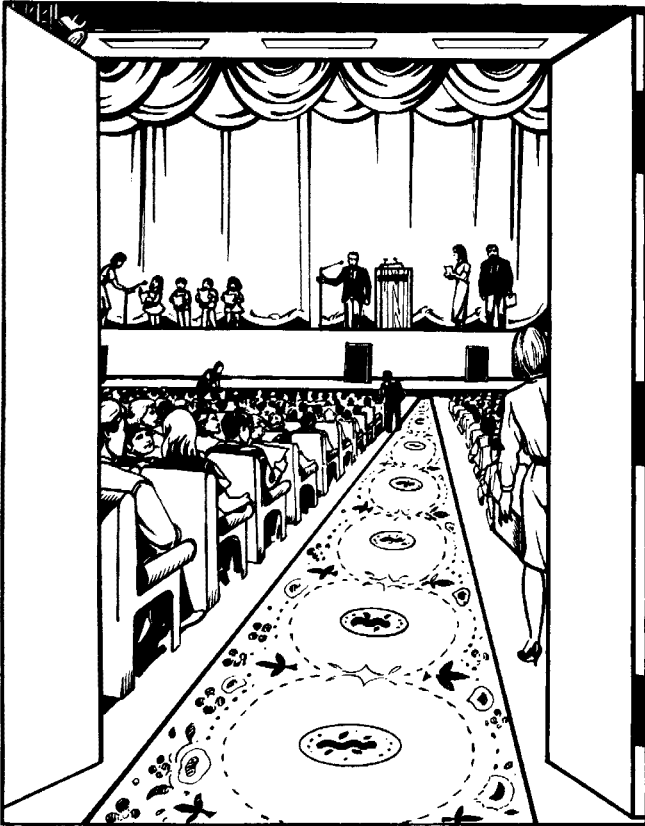
FIREDOOR CORPORATION OF FLORIDA
P.O. Box 380878 1350 N.W. 74 Street
Miami, FL 33238-0878 Miami, FL 33147
(305) 691-1500 • Fax: (305) 836-4797



FIRESONIC

**49
PAIR**

Sound Rated Hollow Metal
Door Assembly — STC Rating 49



KEY FEATURES

- Standard mortised hinges
- U.L. rated up to 3 hour/A label
- On-site engineering services
- Tested as an operable, standard 1 3/4" door in accordance with ASTM E90-90
- 4 - 6 week delivery
- Installation coordination available on request
- ASTM/NVLAP tested
- Custom lab and field tests available



SOUND TRANSMISSION CLASS (STC) TABLE		
STC Value	Rating	Description
50-60	Excellent	Loud sounds heard faintly or not at all.
40-50		
35-40	Good	Loud speech heard but hardly intelligible.
30-35	Fair	Loud speech understood fairly well.
25-30	Poor	Normal speech understood easily and distinctly.
20-25	Very Poor	Low speech audible.

PROJECT REFERENCES INSTALLATIONS			
PROJECT	TYPE OF INSTALLATION	ARCHITECT	LOCATION
Broward Center For The Performing Arts	Public Auditorium	Borelli, Frankel, Blitstein Assoc.	Ft. Lauderdale, FL
Discovery Center	Theatre	Evernon Johnson Assoc.	Ft. Lauderdale, FL
The Dolphin Hotel	Hotel/Convention Center	Alan Lapidus, PC	Lake Buena Vista, FL
The Swan Hotel	Hotel/Convention Center	Alan Lapidus, PC	Lake Buena Vista, FL
Hostos Community College	School Auditorium	Gwathmey, Siegel Assoc.	Bronx, NY
Kennedy Middle School	School Auditorium	Design Matrix	Clearwater, FL
Merck Office Building	Office Bldg./Conference Center	Kevin Roche & Associates	Readington, NJ
26th Ward	Dewatering Facility	Stone & Webster Hazen & Sawyer	New York, NY
South American Project	Embassy	Leo A. Daly	La Paz, Bolivia
Peace Vector IV	Military Barracks & Headquarters	Burns & McDonnell	Sakara, Egypt

SPECIFICATIONS SECTION 08380 — SOUND RETARDANT STEEL DOOR AND FRAME ASSEMBLIES

PART 1. GENERAL

1.01 SCOPE OF WORK

- A. The work required under this section shall consist of the following items as herein specified.
1. Furnish hollow metal, sound rated doors and frames — **STC 49** rating.
 2. Furnish hollow metal, fire/sound rated doors and frames.
 3. Furnish sound gaskets, thresholds and hinges.

1.02 RELATED WORK

- A. The following work is specified elsewhere and is not included in the work of this section:
1. Installation (or grouting) of frames and doors.
 2. Installation of sound seals.
 3. Furnishing and installation of finish hardware.
 4. Glass and glazing.
 5. Finish painting

1.03 SUBMITTALS

- A. Submit the following for architectural approval:
1. Shop Drawings: Product data including manufacturer's specification, details of construction, materials, dimensions, hardware preparation, gasketing, label compliance, sound rating, profiles, and finishes. Provide a schedule of doors and frames, using same reference numbers for details and openings as those on the contract drawings.
 2. Test Reports: Provide copies of sound tests showing compliance with the specified sound ratings. Tests shall be in accordance with ASTM E90-90 as tested by an independent, certified NVLAP testing facility.

1.04 ACOUSTICAL PERFORMANCE CRITERIA

- A. For door and frame assemblies: Rating of **STC 49**, operable.
- B. Manufacturer shall have at least (5) years experience in production and manufacture of specified materials.
- C. Approved manufacturer:
1. **Firedoor Corporation of Florida**

PART II. PRODUCTS

2.01 MATERIALS

A. FRAMES

1. Form frames of minimum 16GA steel, full factory welded unit construction with corners mitered, reinforced and continuously welded, full depth and width of frames. Knock down type frames are not acceptable.

B. DOORS

1. Provide flush design doors, 1-3/4" thick, constructed with continuous uninterrupted welds at vertical edges "seamless" and internally constructed to produce sound ratings indicated.
 - a. Minimum 18GA face sheets.

C. HARDWARE REINFORCEMENTS

1. Hinge and strike reinforcements minimum 7GA.
2. Reinforcements for surface mounted hardware, minimum 12GA.

D. HINGES

1. Shall be 5" template full mortised extra heavy hinges as manufactured by Hager, Stanley or approved equal.
2. Cam-lift hinges are not required.

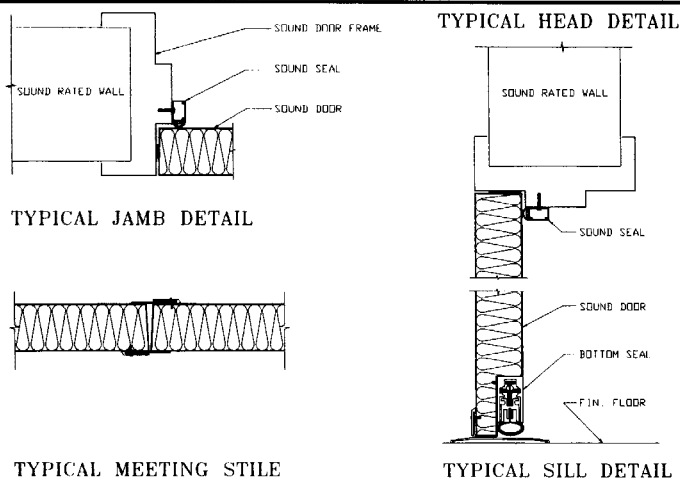
E. SOUND SEALS

1. Shall be manufactured by Zero International.
2. Shall be as tested by **Firedoor Corporation of Florida**.

PART III. EXECUTION

3.01 INSTALLATION

- A. Doors and frames shall be installed by a qualified installer.
- B. Sound seals shall be installed by a company experienced in sound gasket installation as recommended by **Firedoor Corporation of Florida**.



FIREDOOR CORPORATION OF FLORIDA
P.O. Box 380878 1350 N.W. 74 Street
Miami, FL 33238-0878 Miami, FL 33147
(305) 691-1500 • Fax: (305) 836-4797



KEY FEATURES

- Standard mortised hinges
- U.L. rated up to 3 hour/A label
- On-site engineering services
- Tested as an operable, standard 1 3/4" door in accordance with ASTM E90-90
- 4 - 6 week delivery
- Installation coordination available on request
- ASTM/NVLAP tested
- Custom lab and field tests available

SOUND TRANSMISSION CLASS (STC) TABLE

STC Value	Rating	Description
40-50	Very Good	Loud speech heard faintly but not understood.
35-40	Good	Loud speech heard but hardly intelligible.
30-35	Fair	Loud speech understood fairly well.
25-30	Poor	Normal speech understood easily and distinctly.
20-25	Very Poor	Low speech audible.

PROJECT REFERENCES INSTALLATIONS

PROJECT	TYPE OF INSTALLATION	ARCHITECT	LOCATION
Broward Center For The Performing Arts	Public Auditorium	Borelli, Frankel, Blitstein Assoc.	Ft. Lauderdale, FL
Discovery Center	Theatre	Evernon Johnson Assoc.	Ft. Lauderdale, FL
The Dolphin Hotel	Hotel/Convention Center	Alan Lapidus, PC	Lake Buena Vista, FL
The Swan Hotel	Hotel/Convention Center	Alan Lapidus, PC	Lake Buena Vista, FL
Hostos Community College	School Auditorium	Gwathmey, Siegel Assoc.	Bronx, NY
Kennedy Middle School	School Auditorium	Design Matrix	Clearwater, FL
Merck Office Building	Office Bldg./Conference Center	Kevin Roche & Associates	Readington, NJ
26th Ward	Dewatering Facility	Stone & Webster Hazen & Sawyer	New York, NY
South American Project	Embassy	Leo A. Daly	La Paz, Bolivia
Peace Vector IV	Military Barracks & Headquarters	Burns & McDonnell	Sakara, Egypt

SPECIFICATIONS SECTION 08380 — SOUND RETARDANT STEEL DOOR AND FRAME ASSEMBLIES

PART 1. GENERAL

1.01 SCOPE OF WORK

- A. The work required under this section shall consist of the following items as herein specified.
1. Furnish hollow metal, sound rated doors and frames — **STC 51** rating.
 2. Furnish hollow metal, fire/sound rated doors and frames.
 3. Furnish sound gaskets, thresholds and hinges.

1.02 RELATED WORK

- A. The following work is specified elsewhere and is not included in the work of this section:
1. Installation (or grouting) of frames and doors.
 2. Installation of sound seals.
 3. Furnishing and installation of finish hardware.
 4. Glass and glazing.
 5. Finish painting

1.03 SUBMITTALS

- A. Submit the following for architectural approval:
1. Shop Drawings: Product data including manufacturer's specification, details of construction, materials, dimensions, hardware preparation, gasketing, label compliance, sound rating, profiles, and finishes. Provide a schedule of doors and frames, using same reference numbers for details and openings as those on the contract drawings.
 2. Test Reports: Provide copies of sound tests showing compliance with the specified sound ratings. Tests shall be in accordance with ASTM E90-90 as tested by an independent, certified NVLAP testing facility.

1.04 ACOUSTICAL PERFORMANCE CRITERIA

- A. For door and frame assemblies: Rating of **STC 51**, operable.
- B. Manufacturer shall have at least (5) years experience in production and manufacture of specified materials.
- C. Approved manufacturer:
1. **Firedoor Corporation of Florida**

PART II. PRODUCTS

2.01 MATERIALS

A. FRAMES

1. Form frames of minimum 16GA steel, full factory welded unit construction with corners mitered, reinforced and continuously welded, full depth and width of frames. Knock down type frames are not acceptable.

B. DOORS

1. Provide flush design doors, 1-3/4" thick, constructed with continuous uninterrupted welds at vertical edges "seamless" and internally constructed to produce sound ratings indicated.
 - a. Minimum 18GA face sheets.

C. HARDWARE REINFORCEMENTS

1. Hinge and strike reinforcements minimum 7GA.
2. Reinforcements for surface mounted hardware, minimum 12GA.

D. HINGES

1. Shall be 5" template full mortised extra heavy hinges as manufactured by Hager, Stanley or approved equal.
2. Cam-lift hinges are not required.

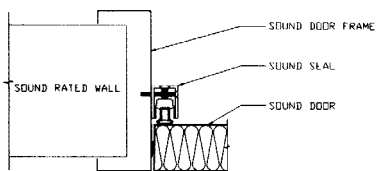
E. SOUND SEALS

1. Shall be manufactured by Zero International.
2. Shall be as tested by **Firedoor Corporation of Florida**.

PART III. EXECUTION

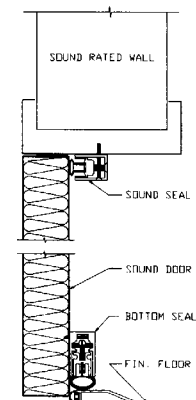
3.01 INSTALLATION

- A. Doors and frames shall be installed by a qualified installer.
- B. Sound seals shall be installed by a company experienced in sound gasket installation as recommended by **Firedoor Corporation of Florida**.



TYPICAL JAMB DETAIL

TYPICAL HEAD DETAIL



TYPICAL SILL DETAIL



FIREDOOR CORPORATION OF FLORIDA
P.O. Box 380878 1350 N.W. 74 Street
Miami, FL 33238-0878 Miami, FL 33147
(305) 691-1500 • Fax: (305) 836-4797